



WALKING MAP IN & AROUND TWYFORD

"Get Twyford Walking"



A Twyford Parish Plan Project
Published by Twyford Village Partnership
April 2013
www.twyfordvillagepartnership.co.uk

A LOCAL COMMUNITY ACCESS MAP

Produced by Twyford Village Partnership in association with the Loddon Valley Ramblers and Twyford & Ruscombe Local History Society.

The first edition of this map was published in April 2010 and completed an Action Point from Twyford's Parish Plan 'Twyford 2020'. It was the result of many hours of voluntary work walking and plotting the routes.

Due to popular demand, this fully revised second edition of the map has now been produced.

It was made possible by a grant from The Co-operative Membership Community Fund. Our thanks go to everyone involved in this project.

TWYFORD VILLAGE PARTNERSHIP EXECUTIVE COMMITTEE

The History Walk is described in 'Village Walks' which can be purchased from Newberys.

Twyford & Ruscombe History Society

www.twyfordvillagepartnership.co.uk

www.lra.org.uk

London Valley Group

Design by Hidden Britain www.hiddenbritain.org.uk

The co-operative membership community fund

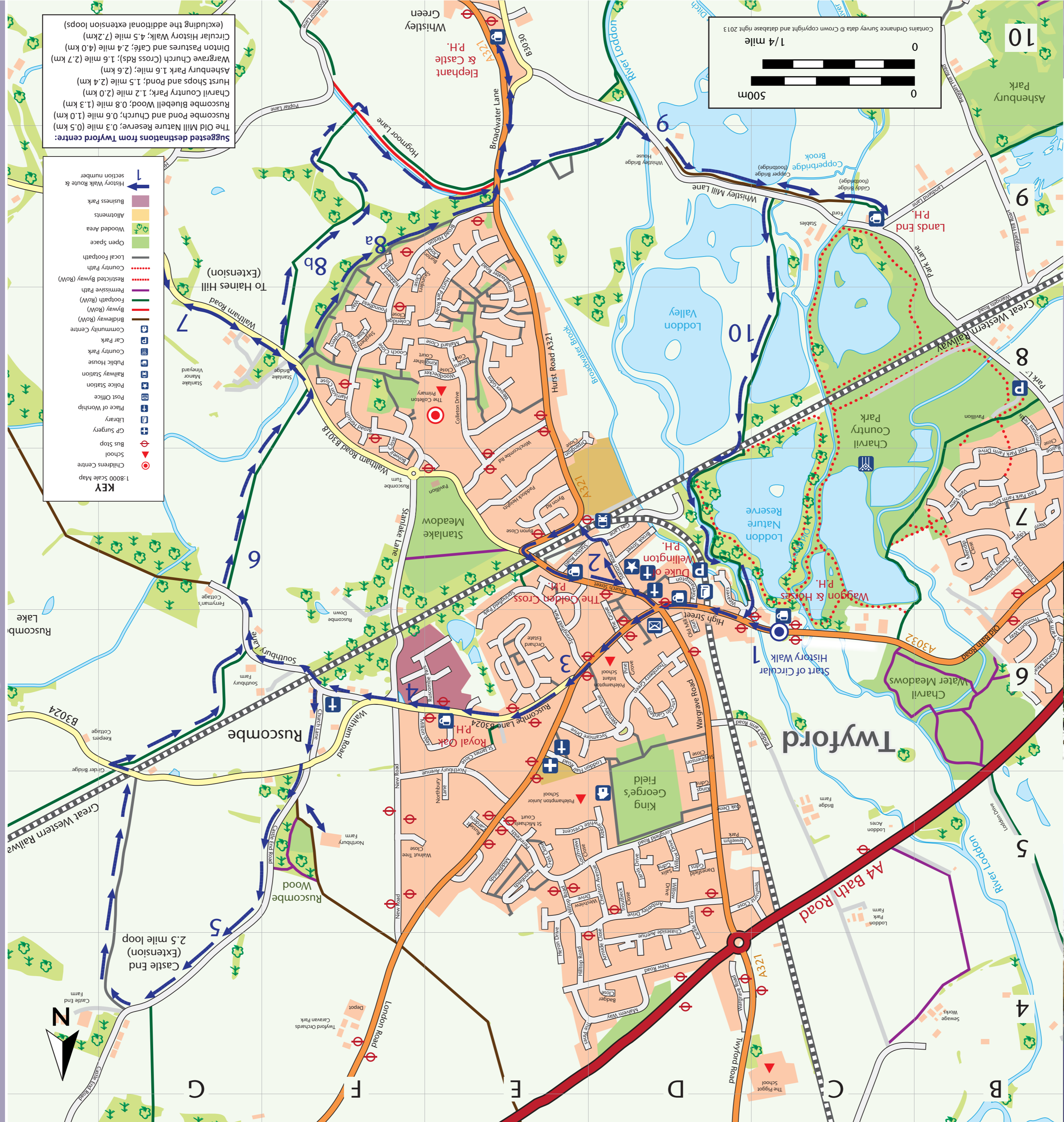
Further Information www.twyfordvillagepartnership.co.uk

www.twyfordhistory.org.uk

History Society

2020

London Valley Group



Suggested destinations from Twyford centre:
The Old Mill Nature Reserve; 0.5 mile (0.5 km)
Ruscombe Pond and Church; 0.6 mile (1.0 km)
Ruscombe Bluebell Wood; 0.8 mile (1.3 km)
Charvil Country Park; 1.2 mile (2.0 km)
Hurst Shops and Pond; 1.5 mile (2.4 km)
Asbury Park; 1.6 mile (2.6 km)
Wargrave Church (Cross Rds); 1.6 mile (2.7 km)
Dinton Pastures and Cafe; 2.4 mile (4.0 km)
Circular History Walk; 4.5 mile (7.2 km)

(excluding the additional extension loops)

KEY

1:8000 Scale Map

	Children's Centre
	Bus Stop
	GP Surgery
	Library
	Place of Worship
	Police Station
	Public House
	Country Park
	Community Centre
	Byway (RovW)
	Byway (RovW)
	Permissive Path
	Footpath (RovW)
	Footpath (RovW)
	Restricted Byway (RovW)
	Country Path
	Local Footpath
	Open Space
	Wooded Area
	Allotments
	Business Park

1:2500 scale map, covers grids A1 to J15

Street Index

STREET GRID	STREET GRID
A1	W1
A2	W2
A3	W3
A4	W4
A5	W5
A6	W6
A7	W7
A8	W8
A9	W9
A10	W10
A11	W11
A12	W12
A13	W13
A14	W14
A15	W15
A16	W16
A17	W17
A18	W18
A19	W19
A20	W20
A21	W21
A22	W22
A23	W23
A24	W24
A25	W25
A26	W26
A27	W27
A28	W28
A29	W29
A30	W30
A31	W31
A32	W32
A33	W33
A34	W34
A35	W35
A36	W36
A37	W37
A38	W38
A39	W39
A40	W40
A41	W41
A42	W42
A43	W43
A44	W44
A45	W45
A46	W46
A47	W47
A48	W48
A49	W49
A50	W50
A51	W51
A52	W52
A53	W53
A54	W54
A55	W55
A56	W56
A57	W57
A58	W58
A59	W59
A60	W60
A61	W61
A62	W62
A63	W63
A64	W64
A65	W65
A66	W66
A67	W67
A68	W68
A69	W69
A70	W70
A71	W71
A72	W72
A73	W73
A74	W74
A75	W75
A76	W76
A77	W77
A78	W78
A79	W79
A80	W80
A81	W81
A82	W82
A83	W83
A84	W84
A85	W85
A86	W86
A87	W87
A88	W88
A89	W89
A90	W90
A91	W91
A92	W92
A93	W93
A94	W94
A95	W95
A96	W96
A97	W97
A98	W98
A99	W99
A00	W00

Maps are overlaid with 1/2 km grid squares

These maps have been produced to encourage the local community to walk from their homes to the village centre and other community facilities, instead of using their cars, and to encourage walking in the surrounding countryside as a healthy leisure pursuit.

They show the by-and footpaths that we hope will assist people to move around their locality on foot, avoiding roads and traffic where possible.

The two maps in this publication are:

- A map of the greater Twyford area at 1:2500 scale extending into the surrounding countryside as far as Dinton Pastures, the Loddon Valley and Wargrave.
- A detailed map of Twyford at 1:8000 scale which shows local information, walks and linking footpaths within the village.

The Ramblers Association have assisted in ensuring all definitive footpaths of the area are included.

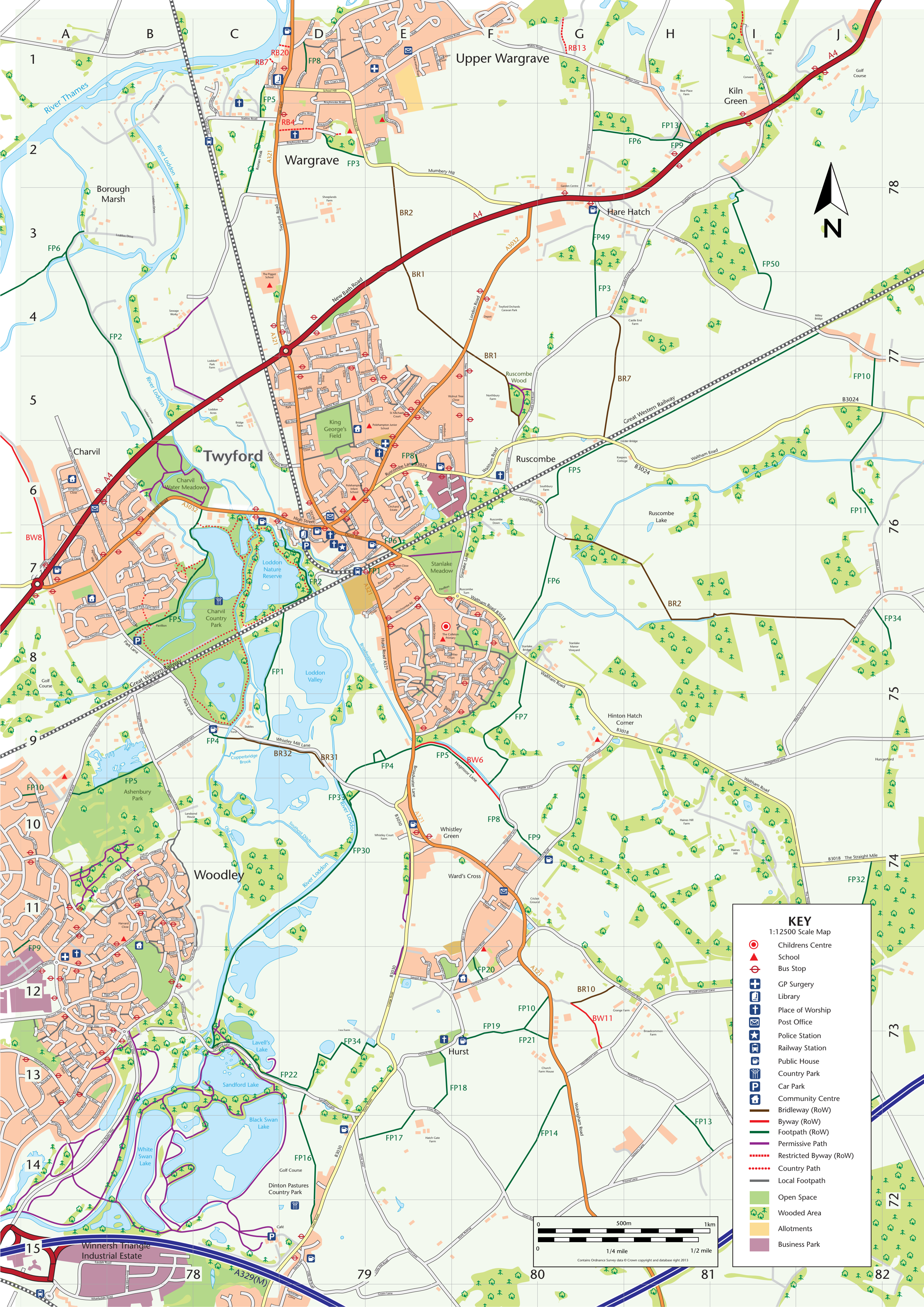
The Twyford & Ruscombe History Society booklet 'Village Walks' describes in detail a circular walk past many historic buildings in the area. This route is marked by blue arrows and associated walk book section numbers on the 1:8000 scale map.

The paths on these maps fall into two main groups:

- Urban footpaths shown by dark grey lines generally have hard surfaces.
- Rural paths shown in other colours are often unsurfaced and could be muddy.

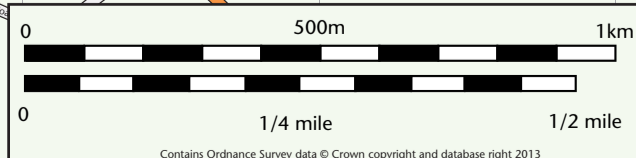
Care should be taken on the recommended routes. The Highway Code and the usual rules of road safety and the Country Code should always be observed.

Whilst we have tried to ensure the accuracy of all information, we do not accept any liability for inaccuracies or any use made by you of them. The routes shown are not necessarily rights of way and are intended as a guide only.



KEY
1:12500 Scale Map

	Childrens Centre
	School
	Bus Stop
	GP Surgery
	Library
	Place of Worship
	Post Office
	Police Station
	Railway Station
	Public House
	Country Park
	Car Park
	Community Centre
	Bridleway (RoW)
	Byway (RoW)
	Footpath (RoW)
	Permissive Path
	Restricted Byway (RoW)
	Country Path
	Local Footpath
	Open Space
	Wooded Area
	Allotments
	Business Park



Contains Ordnance Survey data © Crown copyright and database right 2013